



Robotic Pool Cleaner

For Commercial - Public Swimming Pools

Operator Manual

Robotic Pool Cleaner

For Commercial - Public Swimming Pools

Operator Manual

01

Robot nettoyer de piscine

Pour piscines public et commercial

MODE D'EMPLOI

12

Automatischer Schwimmbeckenreiniger

Für öffentliche Schwimmbäder

Bedienungsanleitung

22

PULITORE AUTOMATICO PER PISCINE

Per piscine pubbliche/commerciali

Manuale Operativo

33

Limpia fondos Automático

Para Piscinas Comerciales

Manual de Operación

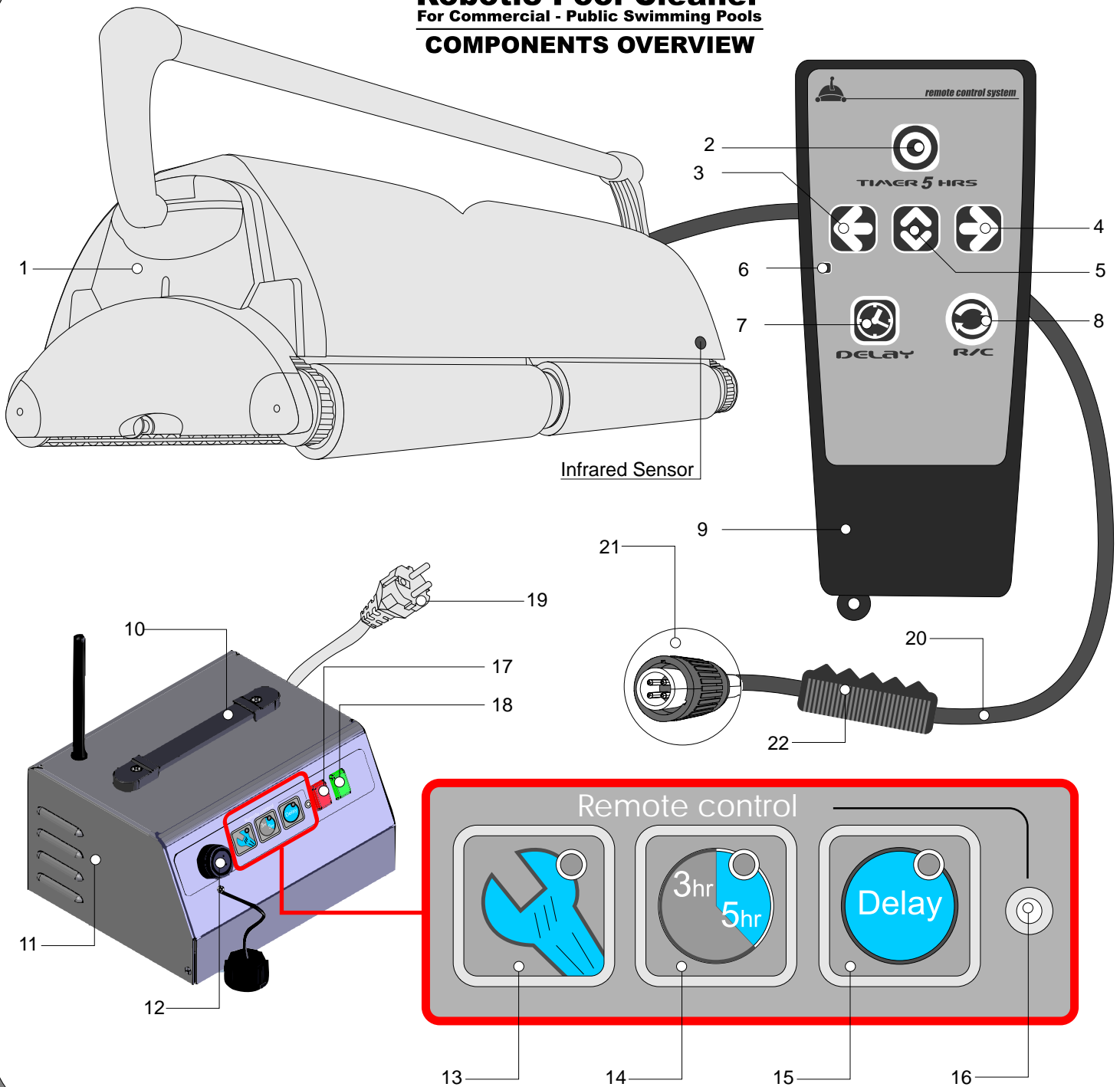
42

Aspirador Automático

Para Piscinas Públicas e Comerciais

53

Robotic Pool Cleaner For Commercial - Public Swimming Pools COMPONENTS OVERVIEW



Pool Cleaner

1. Robotic Pool Cleaner

Remote Control

2. timer button
3. left turn button
4. right turn button
5. change direction button
6. LED
7. delay button
8. remote control mode button
9. remote control transmitter

Power Supply

10. handle
11. power supply housing
12. socket
13. **service** LED
14. **3Hr / 5 Hr** LED
15. **delay** LED
16. **power** LED
17. OFF button (red)
18. ON button (green)
19. Plug

Floating Cable

20. floating cable
21. plug (transformer to unit)
22. E-Z Swivel

OPERATING INSTRUCTIONS

Read Carefully Before Using Your Pool Cleaner.

Location of the Power Supply Unit (Transformer)

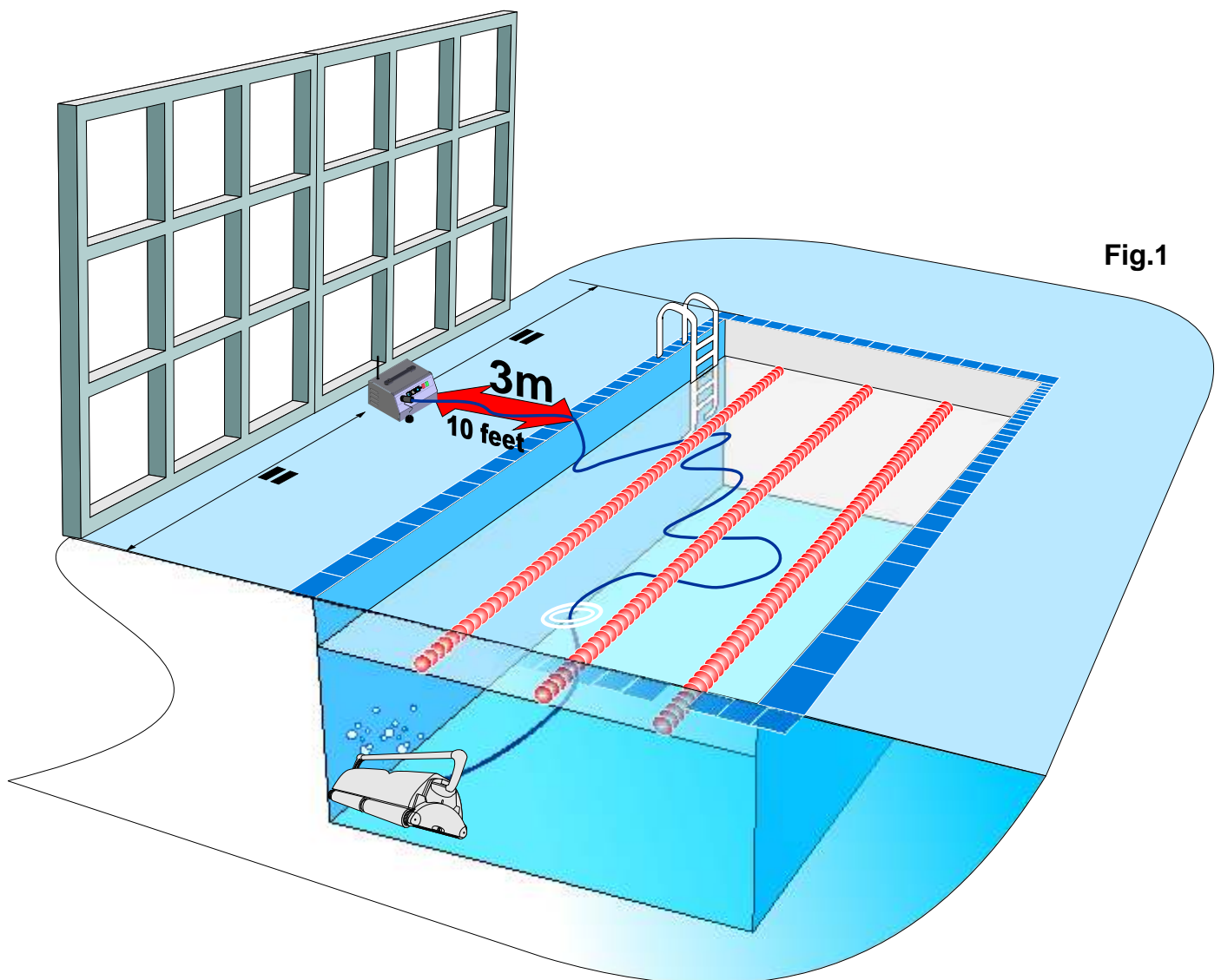
The power supply unit should be placed in any sheltered area, at least 3 meters (10 feet) away from the swimming pool. Also, the power supply should not be left out in rain or placed in puddles of water. If possible, place the power supply halfway the distance of the length of the pool. (fig.1) This will allow the cable and the unit to reach any corner of the pool.

The enclosed power supply is configured for **ONE** of the following inputs:

a) 115 V b) 230 V

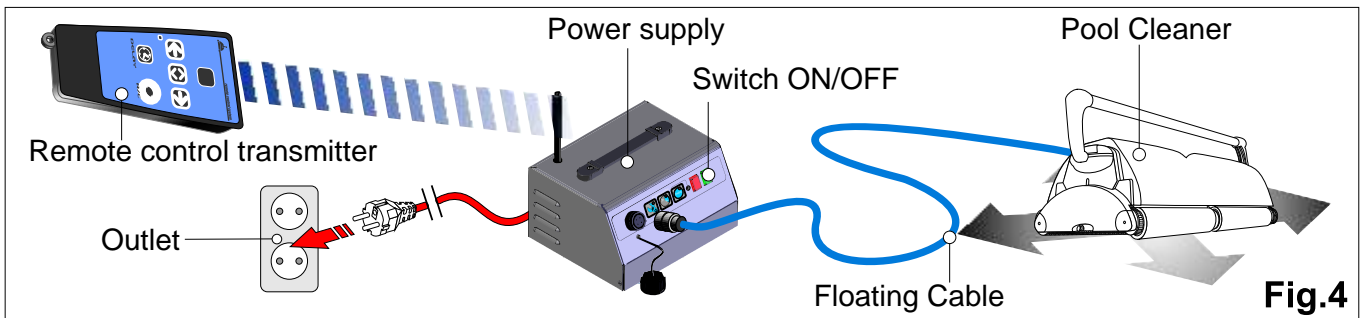
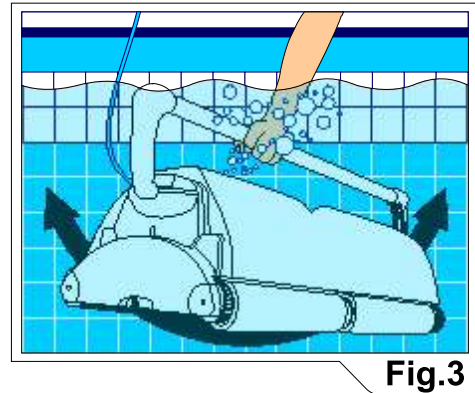
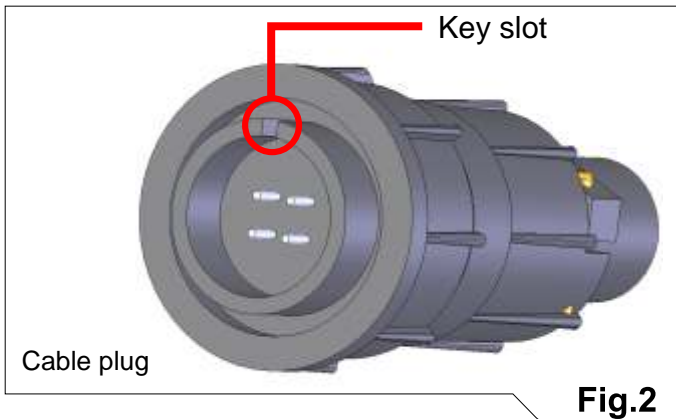
Make certain that the sticker on the back of the transformer specifies the correct voltage input which you are plugging the power supply into.

WARNING!! A ground fault current interrupter (GFCI in USA) or a residual current device (RCD-Europe) must be installed to protect your electrical outlet and to prevent any possible electrical shock.



To Operate Your Pool Cleaner

- 1) Plug the pool cleaner cable into the power supply. Make sure the key on the plug corresponds exactly with the key slot on the socket of the power supply (fig. 2)
- 2) Completely immerse the cleaner in water.
- 3) While the pool cleaner is in the water, gently tilt it side to side (fig. 3). This will allow any trapped air to escape through the pump outlets. Then, with a gentle push, allow the cleaner to sink to the bottom of the pool.
NOTE: If the pool cleaner does not sink to the bottom of the pool, it's a result of trapped air. This air must be removed for proper operation (Repeat step 3).



- 4) Uncoil the floating cable fully and spread it over the pool water surface as evenly as possible. Make sure the cable has no tangles or kinks. (fig. 1)
- 5) Plug the power supply into a proper grounded outlet. (Check again the proper voltage). Switch ON the power supply (fig 4). The pool cleaner will start to operate and clean the pool in accordance with the cleaning program. This pool cleaner has four cleaning programs:
 - A) The **STANDARD AUTOMATIC CLEANING PROGRAM (3,5 hours)**.
 - B) The **5 HOURS -AUTOMATIC CLEANING PROGRAM**
 - C) The **RADIO REMOTE CONTROL Program**.
 - D) The **DELAY Program**
(For details see page 5)
- 6) The cleaner is equipped with an internal timer. It is shipped from the factory with the timer set to automatically stop the unit after 3,5 hours of work.
- 7) To start the pool cleaner, press the power supply ON button. The pool cleaner will begin working in the Standard Automatic Cleaning Program.

CAUTION:

Do not switch the power supply ON if the pool cleaner is not fully submerged in water. Operating your cleaner outside the water will cause severe damage immediately and also will result in LOSS OF WARRANTY. The pool cleaner should not stay in the pool permanently. After the pool has been cleaned, remove it from the water. Always remember to switch OFF the power supply and unplug it from electrical outlet before removing the cleaner from water.

RECOMMENDATION:

In hot climate, we recommend that you allow the cleaner to remain in the pool 15-20 minutes following the end of the cleaning cycle. This will allow all motors to cool completely.

WARNING: THIS POOL CLEANER SHOULD NOT BE OPERATING WHILE PEOPLE ARE SWIMMING IN THE POOL!

Cleaning Programs

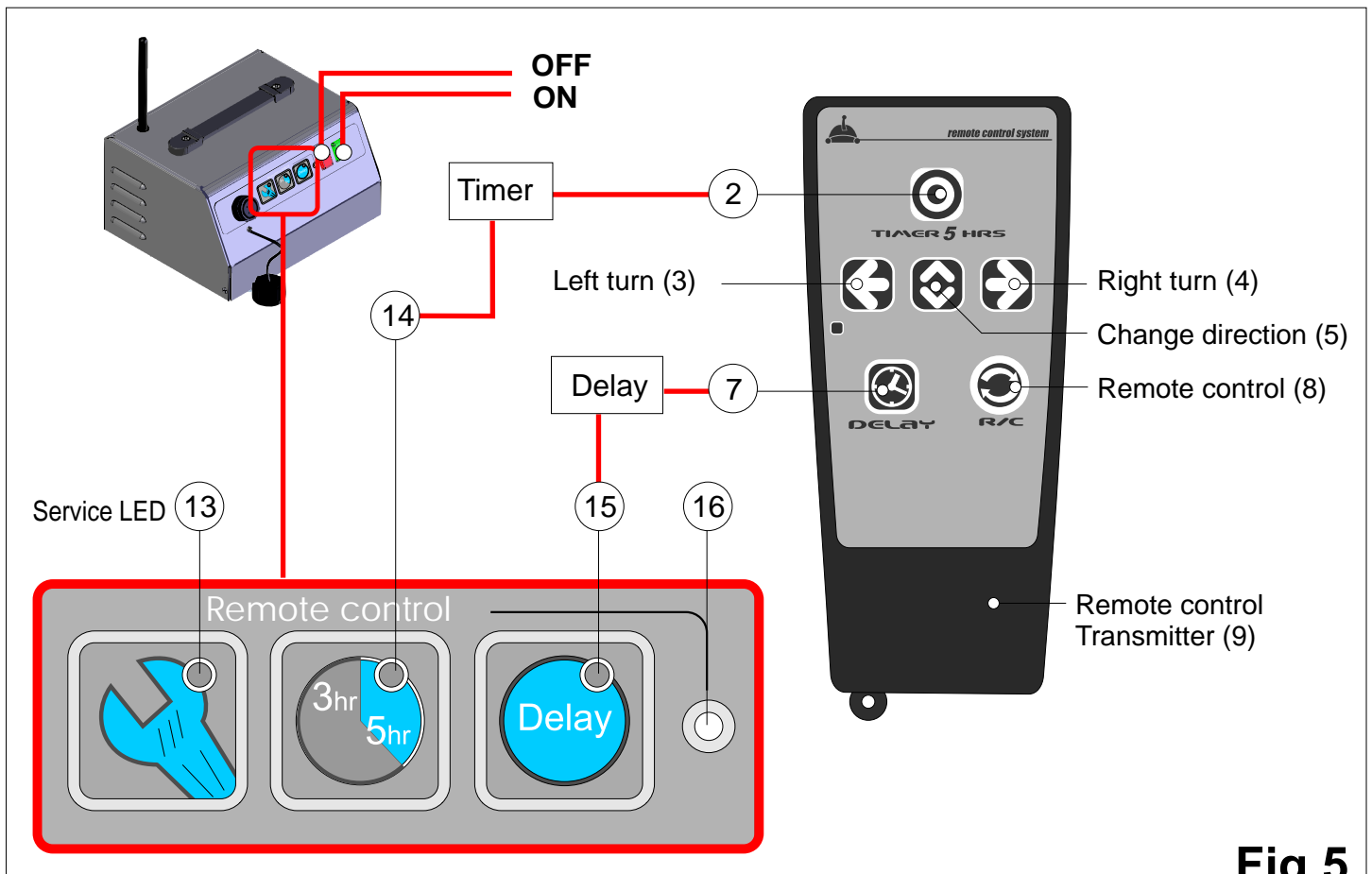


Fig.5

This pool cleaner has FOUR CLEANING PROGRAMS.

- A) **Standard Automatic Cleaning Program- 3.5 Hours (Default program)**
- B) **Special Automatic Cleaning Program- 5 Hours**
- C) **Radio Remote Control Program.**
- D) **Delay Program**

Cleaning Programs :

A) Standard Automatic Cleaning Program- 3.5 Hours

The ROBOT always starts working in this mode. The Robot will clean the pool in 3.5 Hours while in this automatic program. After 3.5 hours, the robot will automatically stop and the power supply will register one cycle of use.

B) Special Automatic Cleaning Program- 5 hours



For larger commercial pools, the user may choose this program by pressing on the "Timer 5 HRS" button located on the Remote Control Transmitter. This is done after the Robot has already been started in the water. The Robot will automatically clean the pool in 5 hours. When selecting the 5 hours option, the 5HRS LED located at the front panel of the Power Supply (14) will illuminate. After 5 hours of work, the robot will automatically stop and the power supply will register two cycles of use.

C) Radio Remote Control Program



The Remote control program enables the user to operate the Robot utilizing a Remote Control Transmitter (9). In order for the Robot to operate in this mode, the user must press the "R/C" button once (8). The RC mode gives the user total control of the Robot's movements: forward, backward (5) left turn (3) and right turn (4). The user has the option of switching to the RC program from any other program. When operating the Robot in the RC program, all sensors (infrared sensor, change direction sensor or beach boy sensor) are disabled. While the Robot is operating in the RC program, the "Power" LED on the power supply (16) will continuously blink.

D) Delay Program



The DELAY mode is designed to permit sedimentation of debris on the swimming pool floor before commencing the cleaning cycle. Before leaving the pool premises, the operator will place the Robot in the swimming pool, commence the cycle, choose between 3,5 and 5 Hours timer and will press the "DELAY" button on the RC Transmitter (7). This will switch the Robot to a STAND-BY mode for a period of two hours. After two hours (when all debris sinks to pool floor) the Robot will automatically begin to clean the pool in its automatic program (3,5 or 5 Hrs). When DELAY mode is selected, the "DELAY" LED located in the front panel of the power supply (15) will illuminate. In order to exit this mode, the operator must press the "DELAY" button again. When Robot is in DELAY mode, all other buttons are disabled.

SERVICE LED.



This indication light is located in the front panel of the power supply (13) and will light up if the Robot is requested for service. When the protection system of the drive motors or pump motors recognizes a problem, the LED will blink.

At this point, please switch power supply "OFF" for 1 minute and turn "ON" again. This serves as a "RESET".

If the blinking persists, please follow the following steps:

- 1) Check for any obstructions in the transmission (Drive Belts and Wheels)
- 2) Check for any obstructions in the pump's propellers

Should you discover any foreign matter obstructing the above two, remove the obstruction and turn the power supply "ON". The LED will most likely not blink, indicating the unit recognizes normal operation. If at this point, the blinking continues, please contact your local authorized service center.

IMPORTANT TIPS

Beach Boy System (Air Sensor):

The Robot can work in modern **Beach Pools**. The unit is equipped with a special “**Beach Boy System**” (Air Sensor)

If the Robot leaves the water for any reason, the **Beach Boy System** will detect the fault and will attempt to return the robot to safe operating water level (Back to the pool). Should the Robot not find safe operating water level after 25 seconds, the Robot will turn OFF automatically in order to protect all components.

- **Shut off and unplug the power supply every time you remove the cleaner from the water.**
- **Clean the filter bag after every cycle.**
- **Replace worn brushes to ensure maximum cleaning performance.**
- **Save your cleaner’s packaging for off-season storage or for shipping the unit to your dealer if service is required.**
- **When not in use, store the unit and accessories on the caddy in a sheltered place.**
- **Clean the unit with fresh water after every cleaning cycle. This will keep your robot clean of chlorine or other chemicals and will assure extended life of all components**
- **DO NOT LEAVE YOUR CLEANER AND ESPECIALLY THE POWER SUPPLY (TRANSFORMER) IN DIRECT SUNLIGHT WHEN NOT IN USE .**
- **Periodically straighten out the floating cable using the E-Z Swivel.**

Cable care

The cable may become twisted after a period of time in use. To correct this condition, simply lock the moveable handle on the top of the cleaner in the opposite diagonal direction. The pool cleaner will now travel in the opposite direction while cleaning your pool and the cable will uncoil. Check the cable periodically for external damage. If the problem persists, use the E-Z Swivel device.

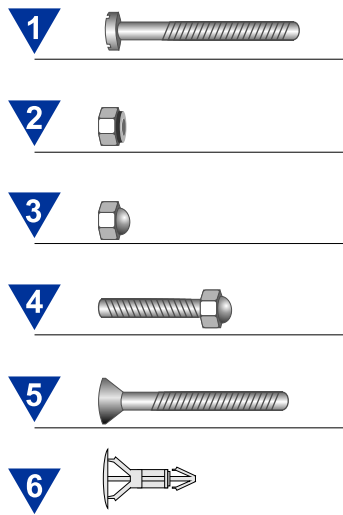
E-Z SWIVEL - Location

Holding with one hand the E-Z Swivel.

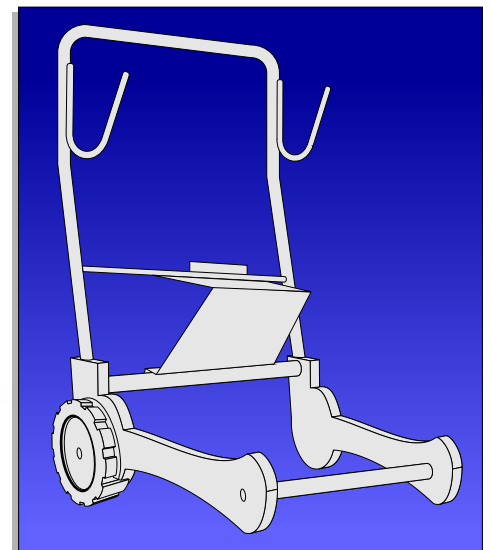
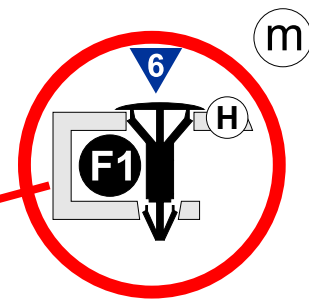
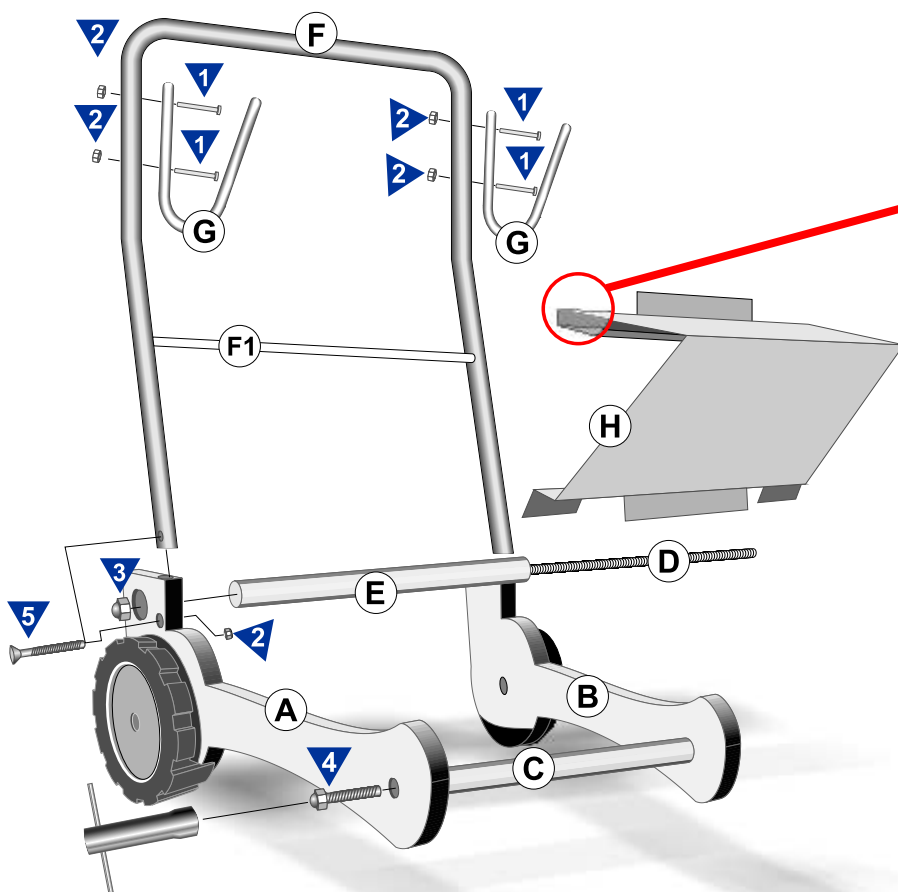
The core will rotate inside the cover and in this way will untangle the cable.

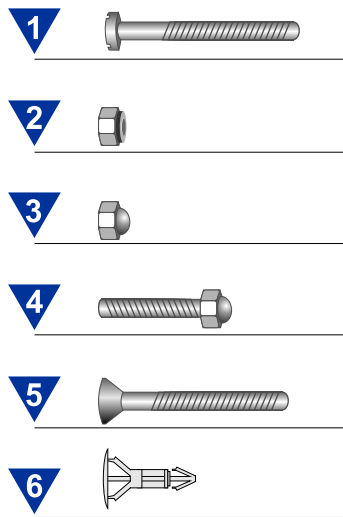
Handle Cover
Core
Cable Assy

patent pending

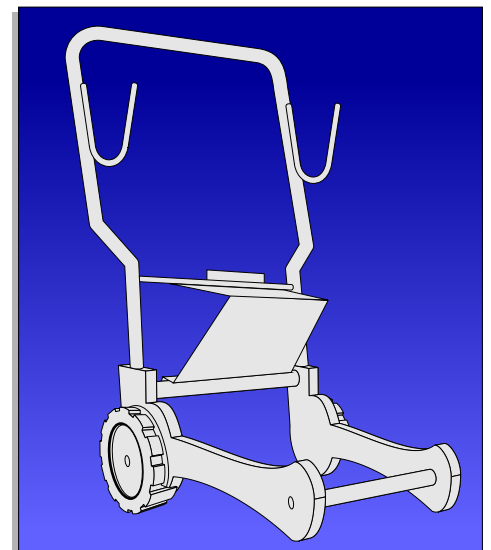
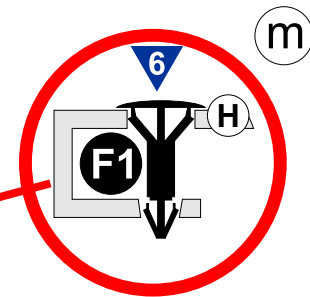
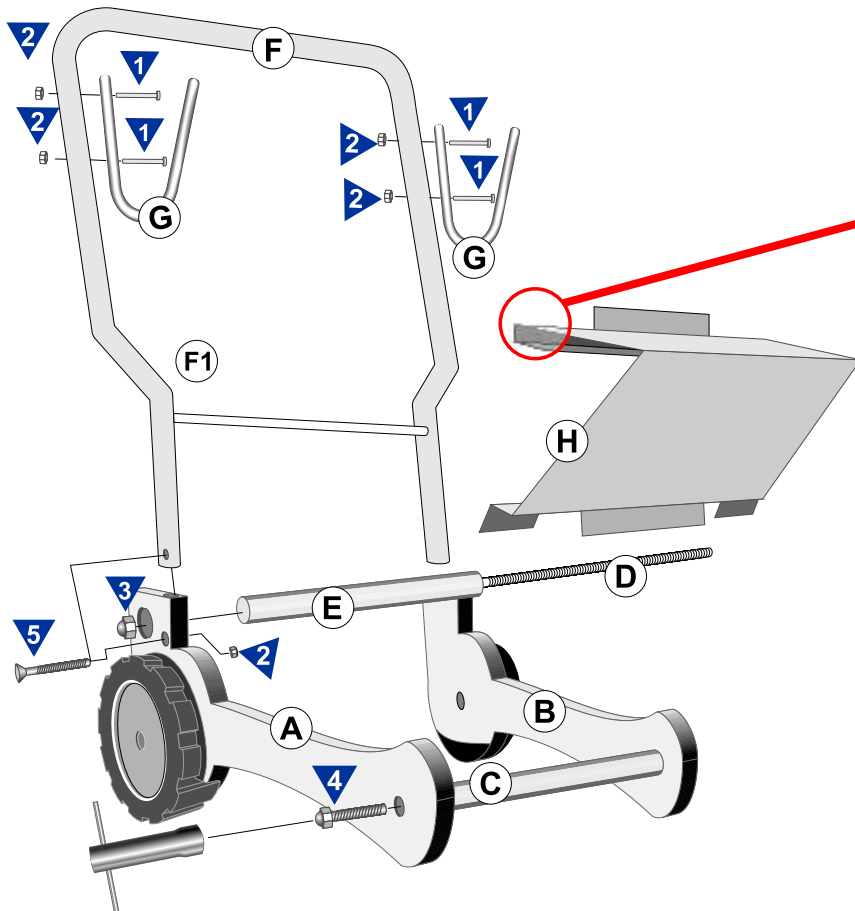


- (A) Right Plate
All connection steps for part A are the same for part B
- (B) Right Plate
- (C) Weighted Front Rod
Connect part A and B of front with screw #4
- (D) Thread Rod
Fits inside part E
- (E) Back Rod
Connects A and B in the rear of assembly with nut #3
- (F) Handle
Connects to A and B in the rear at bottom part with screw #5 and nut #2
- (G) Cable Holders
Connect to F by utilizing screw #1 and nut #2
- (H) Power Supply Shelf
Connects to rod F by pressing lightly. It then leans on rod E and is secured by two plastic pins #6. See detail M





- (A)** Right Plate
All connection steps for part A are the same for part B
- (B)** Right Plate
- (C)** Weighted Front Rod
Connect part A and B of front with screw #4
- (D)** Thread Rod
Fits inside part E
- (E)** Back Rod
Connects A and B in the rear of assembly with nut #3
- (F)** Handle
Connects to A and B in the rear at bottom part with screw #5 and nut #2
- (G)** Cable Holders
Connect to F by utilizing screw #1 and nut #2
- (H)** Power Supply Shelf
Connects to rod F by pressing lightly. It then leans on rod E and is secured by two plastic pins #6. See detail M



Troubleshooting Guide

PLEASE CHECK THE FOLLOWING BEFORE CALLING YOUR SERVICE CENTER

Before troubleshooting, the pool cleaner must be disconnected from the power supply and the power supply must be unplugged from the electrical outlet to prevent damage to the unit and possible personal injury.

Problems	Things to check
<p>1. Unit does not pump water or move:</p>	<ul style="list-style-type: none"> a) Check to see if electric outlet has power. b) Check if transformer is plugged into a grounded outlet and the blue cable assembly is plugged into the transformer.* c) Switch the power off and on a few times. Allow 45 seconds between “on” and “off”.
<p>2. Unit does not pump water at all, or pumps slowly but moves:</p>	<ul style="list-style-type: none"> a) Check to see if propeller is seized due to accumulation of hair or debris on the propellers. Remove the top screws on each outlet top and clean the propeller. When reassembling the top cover, do not overtighten the screws. b) Check to see if the filter bag is thoroughly clean. Clean as necessary. c) If a and b are negative, check the pump motors. If they are not functioning send the unit to your service center.

*The transformer cord can only be replaced with the aid of special purpose tools normally available only to Authorized Aqua Products Dealers, Distributors and Service Centers.

Problems	Things to check
<p>3. Unit does not move but does pump water:</p>	<ul style="list-style-type: none"> a) Check to see if forward/reverse motion is obstructed by foreign matter; hair, debris, etc. on drive belts or drive tracks or there is an entanglement with the power cord. Clean as necessary. b) Check if drive belts have slipped out of place. Also check for proper tension of drive belts. If necessary replace belts. c) Check for loose drive motor connections. d) If a, b, and c are negative, check the Master and Slave motors. If one or the other is not functioning, send the unit to your service center.
<p>4. Unit does not pick up dirt and debris:</p>	<ul style="list-style-type: none"> a) Check 2a and 2b of this guide.
<p>5. Unit does not seem to cover the entire pool:</p>	<ul style="list-style-type: none"> a) Most likely a thorough cleaning of the filter bag is needed. b) Check to see that the blue cable is properly spread out and is untangled. c) Allow the unit to run in the pool for the entire cleaning cycle. d) Make sure all debris has been deposited in the bottom of the pool by using the "DELAY" mode. e) Change the cycle from 3.5 hr. to 5 hr. f) After following all of the above, if there is still a problem, call your dealer for specific additional assistance.

Problems	Things to check
<p>6. Remote control does not operate properly:</p>	<ul style="list-style-type: none">a) Press the R/C button in the Remote Control Transmitter and check if the R/C led is blinking in the Transformer.b) Check the battery in the Remote Control Transmitter, replace if necessary.c) Make sure that you activate the RC System no more than 30 meters away from the Transformer, pointing the control box to the antenna.d) If there is still a problem with the RC System, call your service center for assistance.